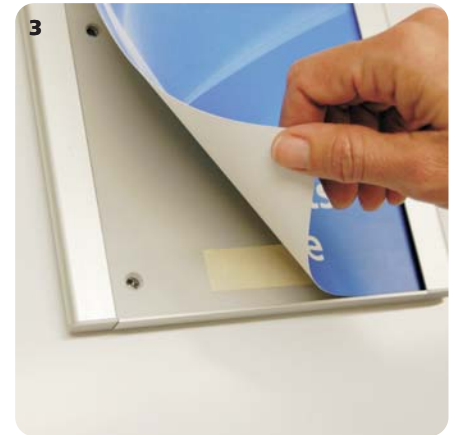


Insert Removal

1. Press Arris Suction Cup Tool firmly in the TOP CENTER or BOTTOM CENTER of the sign insert.
2. Pull straight out.
3. For large displays and/or when using thicker, laminated digital prints which tend to curl outward, using two to three strips of double-sided low-tack tape applied to the Arris frame core may help ensure displays are kept as flat as possible while still allowing them to be easily removed from the frame. This will also help keep larger display materials in place while inserting the clear lens cover into the frame.



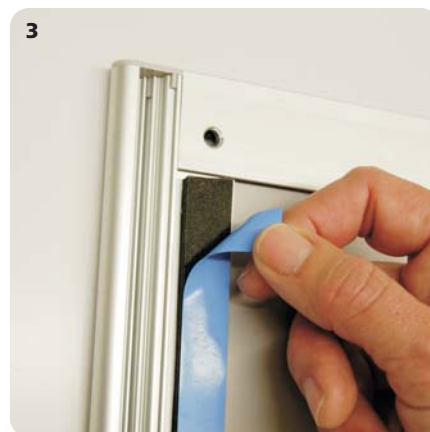
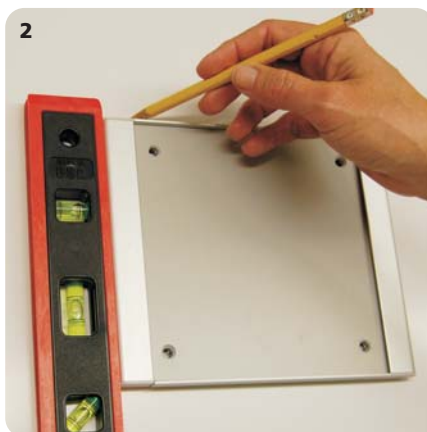
Insert Replacement

1. Insert the entire right edge of the clear lens (or other insert material) into the "pocket" of the right side of the Arris frame. Can also use the left edge of the insert and left side of frame if preferred.
2. Keeping the right edge of the insert within the Arris frame, apply the suction cup tool firmly against the middle of the insert, creating a good suction.
3. Use fingers to support the left edge of the clear lens and pull on the suction cup tool so that the clear lens flexes outward. Pull outward until the left edge of the clear lens is able to "snap" into the pocket of the left side of the frame.



Wall Attachment Instructions: Double Sided Vinyl Tape

1. Determine desired mounting location and ensure surface is clean, dust-free and compatible with vinyl tape mounting*.
2. After sign is leveled, mark top edge of sign location on wall surface using low tack masking tape or a light pencil.
3. Remove liner from the vinyl tape applied to the back of side of the Arris frame.
4. Position sign at the marked installation location and press the sign firmly against the wall surface for several seconds.



* VERY IMPORTANT!

It is the responsibility of the installer to determine that the installation surface is suitable for vinyl tape and that the sign installation steps are followed properly. The performance of vinyl tape can be greatly impacted by factors such as dust, humidity, porosity of the mounting surface, amount of pressure applied against sign at time of installation, etc. By attaching vinyl tape to frames before shipment, Arris Sign Systems is NOT implying that those signs will be suitable for vinyl tape installation at their respective installation locations. Depending upon sign size, display materials and install location, mechanical fasteners or silicon adhesive may be required.

Wall Attachment Instructions: Mechanical Fasteners

1. Ensure that wall surface at installation location is level. Mounting to an uneven surface may distort the Arris frame and negatively impact the sign's performance.
2. Remove the clear lens and any other insert materials from the insert frame.
- 3a. *If your Arris frame features pre-drilled countersunk holes*, simply use those holes to mark the desired mounting location on the wall surface.
- 3b. *If your Arris frame does not already feature pre-drilled countersunk holes*, follow the following instructions carefully:
Drill a 5/32" diameter hole, then use an 82° countersinking bit. Each hole must be 1/2" from the inside frame edge profile. This will ensure the screws go through both frame extrusions. Once holes are drilled, follow steps 3a and 4.
4. Pre-drill holes and apply appropriate anchors as necessary in wall surface at marked locations. Use #6 flathead screws for attachment of frame to wall surface.

